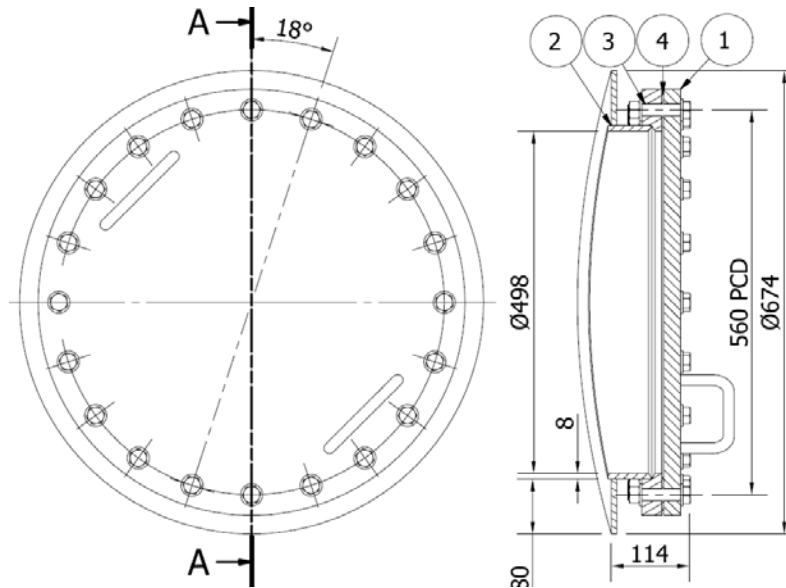




BOLTED MANHOLE ASSEMBLY



DESCRIPTION

Manlid: 20-point Flat Head Bolted Manlid

Neck Ring Assembly: Consists of a Compensating Ring, Profiled Neckring and Flange Ring joined by means of welds.

SPECIFICATIONS

Bolted Manholes can be custom designed in accordance with ASME VIII-1 to satisfy specific customer requirements.

OPTIONS

- Straight neck or Compensated version
- Sizes to customer specifications
- Tank radii from 850mm to 1220mm
- Protruding/Non-protruding neckring

MARKINGS

The following is pin-stamped on the assembly:

- Swift logo
- Assembly & part number
- MAWP
- Other markings specified by the customer

DESIGN CODES AND APPROVALS

Depending on the order quantity; Bureau Veritas design appraisal can be gained confirming the applicable design standards: RID/ADR; IMDG; ASME VIII-1

SUB-ASSEMBLIES

1. Cover
2. Neckring assembly
3. Bolt kit
4. Seal (supplied separately)

MATERIAL

All contact parts in dual certified stainless steel 316/316L. (Handles Stainless Steel 304)

FINISH

Covers are electro-polished and neckrings are blasted and pickled.

TORQUE PROCEDURE

1. Place bolts into position
2. Start next to the handle – tighten in a crossover/clockwise sequence
3. Torque until sealing has been achieved

